

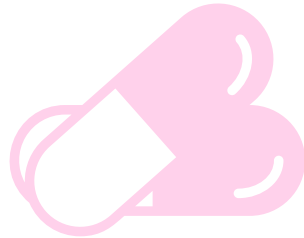
PRO BEAUTY



FILLER *Aftercare*



DO expect swelling
and bruising



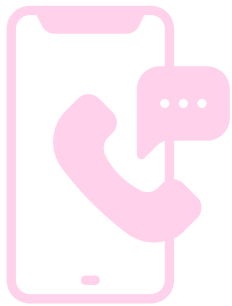
Do take Tylenol
for mild pain



Do apply a
cold compress



Don't remain in the
heat for 72 hours



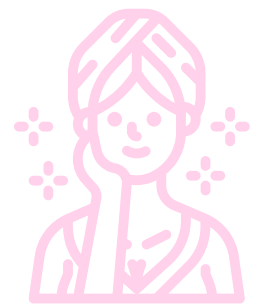
Do contact the
med spa as needed



Don't drink alcohol
for 12 hours



Don't exercise
for 24 hours



Don't apply makeup
for 12 hours

2231 E Pecos Rd, Ste #4 Chandler, AZ 85225



prohealthfunctionalmedicine@gmail.com



480.306.4372

prohealthfunctionalmedicine.com



PROHEALTH
INTEGRATIVE MEDICINE
WHOLE HEALTH FINALLY

